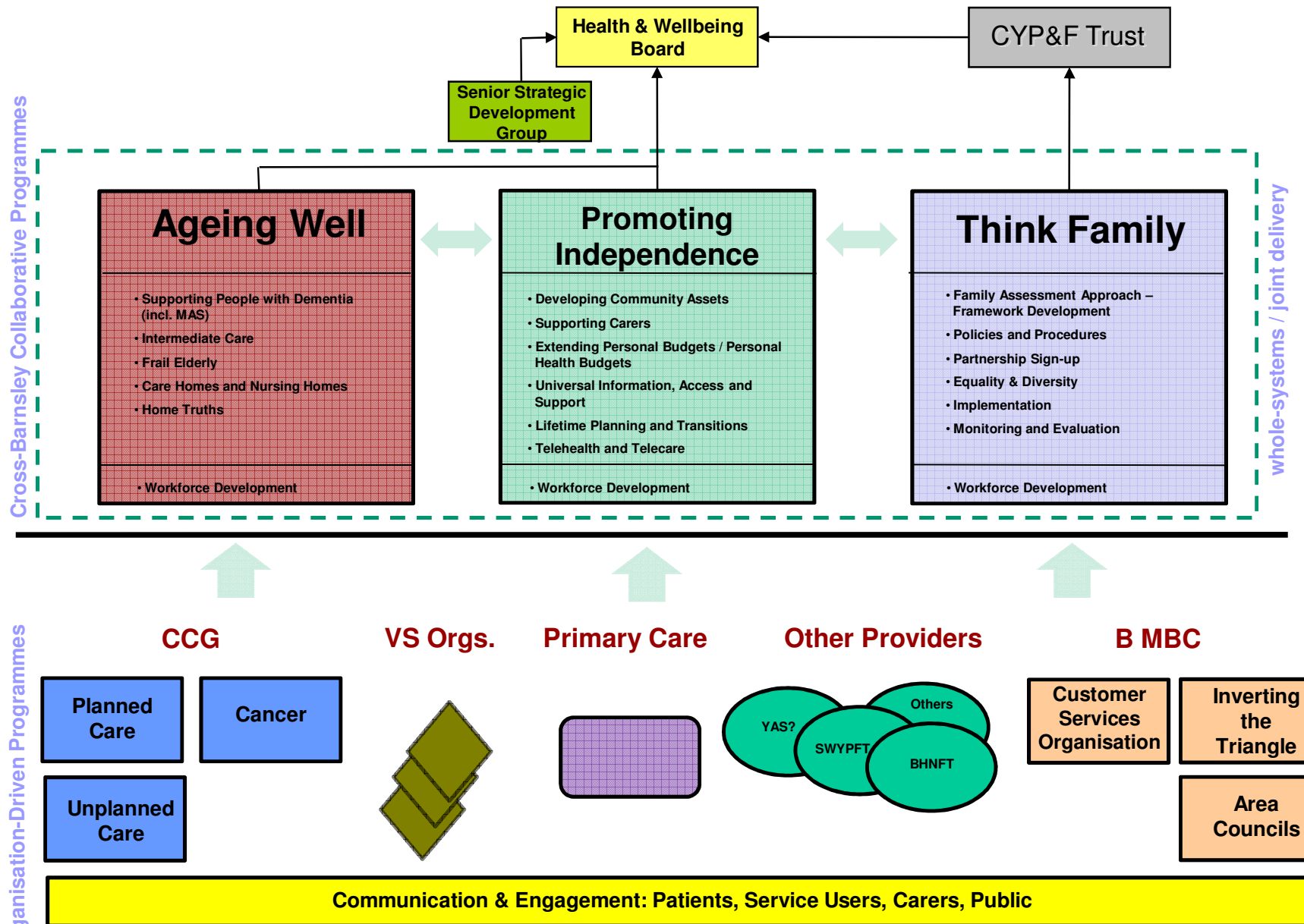


BARNSELY PORTFOLIO STRUCTURE



## **Ageing Well Programme Update**

**Prepared for the Barnsley Health and Wellbeing Board, 1<sup>st</sup> October 2013**

### **1. PURPOSE OF REPORT**

The Ageing Well Programme Board is one of three agreed Programme Boards accountable to the Health and wellbeing Board. The others are Promoting Independence and Think Family. The purpose of this report is to provide members with assurance of the progress that has been made in developing the Ageing Well Programme and to provide an update on the progress of the Ageing Well Programme Board.

### **2. RECOMMENDATIONS**

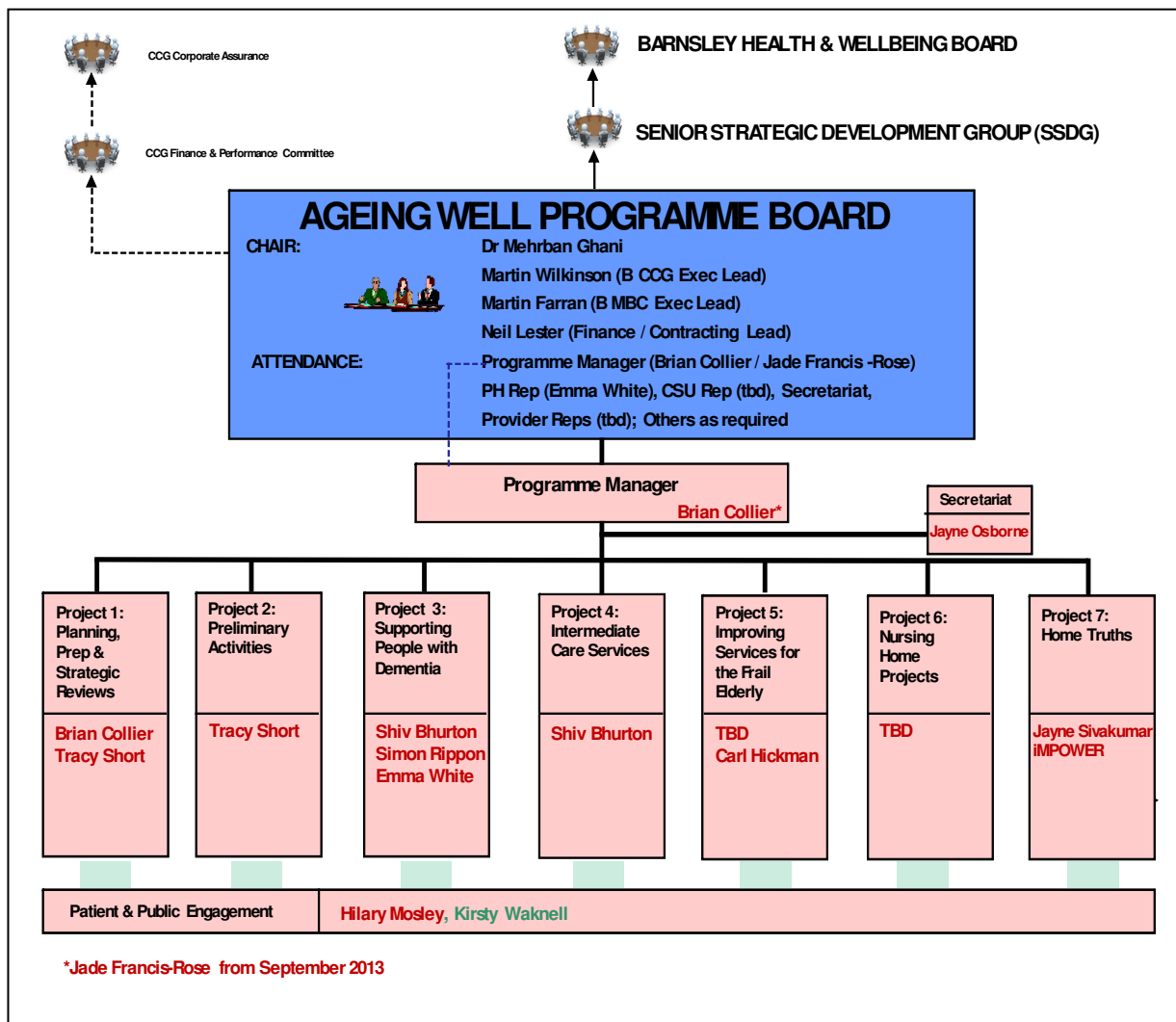
**It is recommended that members note the programme structure, programme manager summary and outlook for next period reports of the Ageing Well Board. It is recommended that members consider whether the format and content of this report provides appropriate information regarding the progress of the Ageing Well Programme Board and potentially the other Programme Boards.**

### **3. INTRODUCTION/BACKGROUND**

The Ageing Well Programme Board has been identified as a 'whole system' programme which is to be jointly delivered by Barnsley CCG and Barnsley MBC. The programme will deliver all of the BCCG priorities for older people (aged 65 and over) in the Commissioning Plan (Vn6) for 2013/14. It will also deliver BMBC priorities for older people, largely around social care.

#### 4. PROGRAMME STRUCTURE

The programme structure has been set out as identified in the diagram below.



#### 5. PROGRAMME MANAGER SUMMARY – Prepared for Ageing Well Programme Board 19/09/2013

Progress has been made with the Dementia Diagnosis task: we now have a Business Case / proposal from SWYPFT (Dave Ramsay) to consider, around undertaking a 1-off sweep of Care Homes, and a development plan to create a Dementia LES.

Progress has also been made with the proposal to implement the Care Homes pilot project as a recurring service across Barnsley – we have a proposal from SWYPFT (Sue Wing) to consider.

The Ageing Well Programme Board has received some additional Activity Briefs (short templates to develop thinking; further scope and identify improvement projects for specific activities) but several are still outstanding. Most of these relate to dementia, and some of these might be undertaken within the MAS (Memory Assessment Service) re-specification and procurement. However, it might be

useful going forward to develop a short strategic statement around dementia, to set out what we are looking to achieve over the next 2-3 years, and taking on board the outstanding key activities. A similar approach would be useful with regard to the Frail Elderly activities.

At the last Programme Board meeting the Programme Board accepted the recommendations of the Memory Assessment Service Review and the intermediate Care review - in both cases, to proceed with a view to re-procurement. This was to be subject to approval by the CCG's Finance & Performance Committee and the Council's Adults and Communities DMT. Both of these bodies have since met and agreed the recommendations. The Ageing Well Programme Board will therefore be asked to formally approve the launch of projects to support these re-procurements.

## MAJOR ISSUES

At this early stage, there are no major specific issues for the Programme Board to deal with. However, it should be noted that the way forward for most of the projects is pending strategic decisions, reviews and approval of proposals / business cases etc. Until these approvals have been given implementation routes and timescales for these projects will remain "to be determined".

## STATUS

The Programme is at amber status, reflecting the current lowest confidence level: delivery of the target increase in dementia diagnosis rates by April 2014.

## KEY ACTIONS

1. Review and approve the Highlight Report.
2. Formally approve activities to support the MAS and IC re-procurements.
3. Review and make decisions around the SWYPFT Business Case to deliver a one-off sweep of Care Homes to support the dementia diagnosis target
4. Review and make decisions around the SWYPFT Business Case to roll out the pilot to provide a recurring service for all Barnsley Care Home residents, including screening for dementia.

<b>6. Outlook for next period ( a brief summary of expected activity / delivery across the Projects / Work streams)</b>	
	<b>Summary of work for next period (13/09/13 – 10/10/13)</b>
<b>Programme</b>	Commissioner and provider representatives to meet shortly to discuss respective Transformational Programmes, agree inter-working relationships etc
<b>Project</b>	
Project 1: Planning , Preparation and Strategic Reviews	Continue developing PID (Programme Initiation Document) in line with Programme development. Following a report to SSDG (16/9) this Programme will report to the HWB (1/10)and the F&PC (October). Jade Francis-Rose will take over as Programme Manager from Brian Collier.
Project 2: Preliminary Activities	PROJECT COMPLETE
Project 3: Supporting People with Dementia	<p><b>MAS (Memory Assessment Service):</b> Following approval from the Programme Board on 19/9 planning will begin to support activities including: notice to current provider, specification sign-off, Membership Council consultation and service re-procurement, to be completed before April 2015.</p> <p><b>Dementia Diagnosis Rates:</b> Activities to support Programme Board decisions around the SWYPFT proposal for a one-off sweep of all Care Homes in Barnsley, plus support for the additional diagnosed.</p> <p><b>Other Activities</b> Further scoping work will be undertaken</p>
Project 4: Intermediate Care Services	<p><b>IC Review:</b> Following approval from the Programme Board on 19/9 planning will begin to support activities including: notice to current provider, specification sign-off, Membership Council consultation and service re-procurement, to be completed before April 2015.</p>
Project 5: Improving Services for the Frail Elderly	Detailed scoping and planning of all activities
Project 6: Care Home ./ Nursing Home Projects	<p><b>Care Home Pilot Roll-Out:</b> Activities to support Programme Board decisions around the SWYPFT proposal for a recurring Care Homes additional care service.</p> <p><b>Care Home LES:</b> A second meeting with Drs Athale / Mellor / Alvarez / North to define a Care Home LES (Locally Enhanced Service) complementary to the SWYPFT proposal..</p>
Project 7: Home Truths Phase 2	Activities to support Programme Board decision on the way forward.

**BCCG Chief Officer:**  
**BCCG Officer Contact:**  
**Telephone No:**  
**E-mail:**

Mark Wilkinson  
Jade Francis-Rose  
01226 433662  
jade.francis-rose@nhs.net